

# PPCUG

## NEWS

A PUBLICATION OF THE PRINCETON PC USERS GROUP

### Calendar

#### General Meetings

Second Monday of the month at the Lawrenceville Library.  
Route 1 and Darrah Lane.

7:00-7:45 PM:

Tech Corner is Open / Social Time

7:45 PM:

Meeting Comes to Order

8 PM:

Featured Presentation

#### Board Meetings

Third Monday of the Month  
8 PM at Lawrenceville Library  
Route 1 and Darrah Lane.

*Board meetings are open to All.*

#### Newsletter Deadline

Articles for the newsletter are due by the last Wednesday of the month.

Articles will be accepted via e-mail to: kurivchack\_p@compuserve.com in the following formats: Word for Windows 6.0, 7.0 or 97; Ami Pro / WordPro, or Ascii Text.

### In this issue

- About PPCUG ..... 2
- Presidents Message ..... 2
- PartitionMagic 4.0 - Review: ..... 3
- Tech Corner ..... 4
- SIG Notes ..... 4
- Member News ..... 4
- PPCUG E-Mail Address ..... 5
- Consultants Corner ..... 5

### This Month

Monday January 11, 1999

### Telephony & the PC

**Jon Conant**  
**Cascade Media Group**

Learn about the advances in the  
Telecommunication Industry  
and  
the messaging systems for office and home use.

At

### Lawrence Library

Meeting Rooms 1 & 2

US Route 1 South & Darrah Lane, Lawrenceville, NJ

☆☆☆☆☆☆ Our New Meeting Location ☆☆☆☆☆

☆☆☆☆☆☆☆☆☆☆☆☆☆☆☆☆☆☆☆☆☆☆☆☆☆☆☆☆☆☆☆☆☆☆

*Meetings of an organization at any of the facilities of the  
Mercer County Library System in No Way implies endorsement  
of its programs*



Our members and guest before the start of the December General Meeting sharing in the holiday spirit of the PPCUG hospitality table.

Digital Photo by Ed Weiss

## About PPCUG NEWS

Published Monthly by:

Princeton PC Users Group  
PO Box 291  
Rocky Hill, NJ 08553  
© Copyright 1998 January 1999  
Vol. 15 No. 1

The reprinting of original material appearing in this newsletter in any other publication must credit the Princeton PC Users Group Newsletter and/or the Princeton PC Users Group and any authors shown. The editor and the Princeton PC Users Group assume no responsibility or liability for damages arising from the publication or non-publication of any article in this newsletter. Opinions expressed in these articles are not necessarily those of the members of the Princeton PC Users Group.

### Voice Mail System

For information about SIGs, meetings, etc. call ..... 908-281-3107

To contact Board Members, use the E-Mail Addresses on page 7 or Web Site.

### Web Site

<http://www.ppcug-nj.org>

### Board Members

President:

Paul Kurivchack ..... 908-218-0778

Vice-President:

TBA .....

Secretary:

Ed Weiss ..... 609-586-1395

Treasurer:

Tom Canavan ..... 732-422-9055

Members-At-Large:

Kim Goldenberg ..... 609-671-9188

Vic Laurie ..... 609-924-1220

Vince Polignano ..... 609-586-1466

Jon Abolins ..... 609-883-8126

### Chairpersons

Disk Library:

Tom Canavan ..... 732-422-9055

Hospitality:

Bill Hawryluk ..... 609-655-0923

Member Records:

Larry Lewis ..... 609-771-9536

Newsletter Editor:

Paul Kurivchack ..... 908-218-0778

Program Coordinator:

Sol Libes ..... 609-520-9024

Web Master:

Jon Abolins ..... 609-883-8126

### Annual Dues Rates

Normal dues rate is \$25.

New Members Only: after February, the rate is \$2 per month times the number of months remaining in the year.

## Coming Events

### February 8, 1999 - DiskJockey 98 - Win 9x /NT Utility

Tony Pereira of Clear & Simple, Inc. will demonstrate the features and benefits of using this feature filled utility.

### March 8, 1999 - Dealing with the Y2K Problem

John Degood of David Sarnoff Labs will speak on the technical aspects of why Y2K is such an issue.

### April 12, 1999 - Tips & Techniques for Better E-Mail

### May 10, 1999 - The History of Personal Computing

Sol Libes will present the early history of computing and the advances that brought us up to where we are today.



## Presidents Message

by Paul Kurivchack

It's 1999 now! Winter is finally upon us with its snow and cold weather, but that should not deter us in our mission to educate our members with outstanding and informative presentations.

Januaries meeting on Telephony by Jon Conant should prove to be very interesting as our analog phones, cell phones, answering machines and computers are all merging into one multipurpose product. Jon will shed some light as to where the technology is taking us.

Februarys meeting will feature a presentation on DiskJockey98 by Clear & Simple President Tony Pereira. March brings John Degood of David Sarnoff Labs to discuss Y2K problems and at Aprils meeting our own Sol Libes will instruct us all in sending better e-mail.

While I'm discussing our upcoming schedule of group activities, is the reminder that we are participating in the Trenton Computer Festival on Saturday and Sunday, May 1 and 2, 1999. The festival will be held at the New Jersey Convention & Exposition Center in Edison, New Jersey. We will be running the parcel pick-up area again this year and we will need approximately 20 to 25 volunteers to help over the two-day period. Sign up sheets will be at the registration table at all regular meetings. Sign up early!

I would like to thank all the members who attended our December general meeting and voted for the 1999 Board. I also hoped everyone had enough to eat and drink at the annual holiday party. Bill Hawryluk did an excellent job once again running our hospitality tables.

Our holiday prize drawing was a success with Fred Rothstein walking away with both the Adobe PageMill and Microsoft Baseball 98 software. Kim Goldenberg won the Age of Empire/Rise of Rome package. Congratulations to all the other winners who took home prizes. I hope that we can continue this type of prize drawing on a regular basis. If any our members have contacts with software or hardware vendors, ask for donations of products to add to the prize drawings.

Lastly, as I am starting my fourth year as President of the Princeton PC User Group I am looking to our members to become as active in our group as possible. I want this to be your group, to grow and offer more to our members. Please write an article or two for the newsletter. It is not that hard to do. Come to our monthly board meetings, just to observe or to put your two cents in. Your comments are always welcomed and needed. Let us make 1999 a great year for the Princeton PC User Group.

See you all at the January meeting.

# PARTITIONMAGIC 4.0

## Software Review

By: Paul Kurivchack

Recently I purchased a copy of PowerQuest Corporations latest release of PartitionMagic, version 4.0 to use on my home PC. I wanted to purchase a larger hard drive and needed a utility to resize the partitions on the fly. I also wanted the ability to run another OS, Windows NT on my PC in the near future. PartitionMagic 4.0 provided all the tools I needed plus some.

One of the things I did not like in earlier versions of PartitionMagic was the fact it was still a DOS based application. Meaning you had to leave Windows 95 to allow PartitionMagic to run and that some steps in its use seemed somewhat confusing. Version 4.0 eliminates the need to leave Windows 9X; in addition, it adds Set-by-Step Wizards for its use, making this version much more user friendly and intuitive to use. These are features that I found most important to me and hopefully to many users, as this is a product you will not use frequently.

Installation was a snap and took but a few minutes to get it up and running. PartitionMagic installs in the Programs Menu version 4.0, Drive Mapper, Magic Mover, a host of help files for the applications and an Uninstall Wizard. Starting any of the applications is just a click away.

### PartitionMagic 4.0

Launching PartitionMagic brings you to the main window giving you a quick overview of the hard drive, partition information in both graphical and list formats, and the Wizards. The Wizards include Create New Partition, Analyze and Recommend, Redistribute Free Space, Reclaim Wasted Space, and Prepare for New OS.

Using the Wizards is the way to go when using PartitionMagic. It walks you through each set of the process along with providing you with a preview of the results.

Creating a new partition is a simple eight-step process using the Wizard with none of the changes going into affect until you click on Apply. The most difficult step is selecting the partition size, file system type and label; otherwise you just answer the question and move to the next step.

Running the Analyze and Recommend Wizard is one of the first tools to use in PartitionMagic. It allows you to analyze the cluster size of each FAT volume and the available free space. It then asks you if you want to proceed to the Redistribute Free Space or Reclaim Wasted Space Wizards.

I used the Redistribute Free Space Wizard and stopped at the preview step, as I did not like the results of the redistribution, three equal sized partitions. I have partitions sized at 6, 3 and 1.1 gigabytes that I am quite happy with. But that is not to say that within six months, I will not have to go

in and redistribute my free space. As I add more applications to my PC and my Win98 directory grows exponentially and will run out of space on my C partition. An essential use of PartitionMagic.

Reclaim Wasted Space Wizard is very useful for converting wasted space on the hard drive from FAT to FAT32 and/or reducing the cluster size if not optimal. As I have three FAT32 partitions and cluster size is optimal, it states you have no wasted space. If it finds FAT partitions, it will prompt you to proceed in converting to FAT32.

In addition to the Wizards is the ability to perform all functions manually via the pull down menus. You can Move and Resize, Create, Delete, Copy, Format, Change Labels and Scanning for Disk Errors.

### Utilities

PartitionMagic 4.0 includes some additional useful utilities. DriveMapper, MagicMover and BootMagic.

DriveMapper is a tool to update and change drive letter mappings so applications will run properly after you create, delete or hide partitions. Again like all PartitionMagic applications, the Wizard works very well and is straightforward to use.

MagicMover is a Wizard that helps move applications from one partition to another. One of the important features of MagicMover is its ability to scan your system for information about your files. It

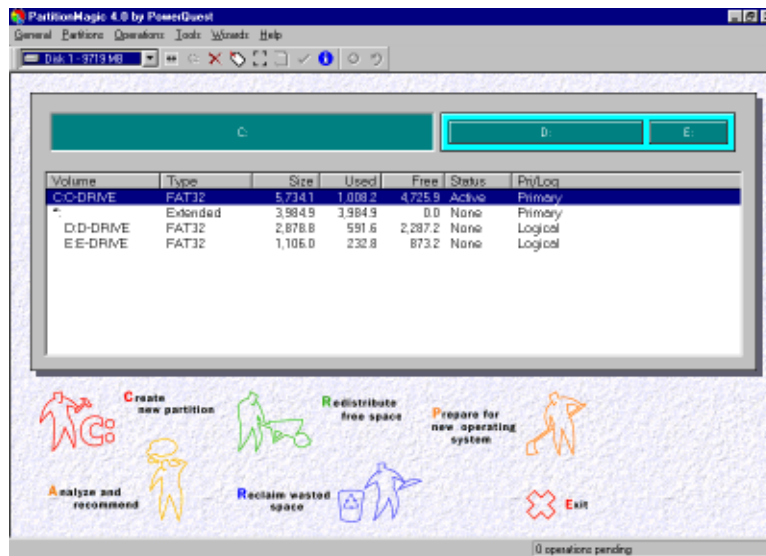
also checks for interdependencies of executables to their correct DLLs and their variants and moves the links correctly so the applications will run properly. Key to successful application moving.

BootMagic is a utility that allows a PC to select and run different OS's (Operating Systems) during the bootup of your system. Now with the advent of Linux, if you want to experiment with that OS without having a second PC, you use Partition

Magic to create the partition for Linux and BootMagic to select and launch it. Again, PowerQuest incorporated the Wizard approach to setup which makes using BootMagic a snap.

### Conclusion

PowerQuest has done an excellent job with PartitionMagic 4.0. It is much easier to use, easier to learn and an excellent utility program to have installed on your PC. It is priced very reasonably for the work it can do. I highly recommend purchasing this product.



## TECH CORNER BY TOM CANAVAN

### PARTITIONS: ONE OR MANY?

Once again, we are brought to the question of partitions on hard drives. The last time I was addressing this, it was 1Gb or multiple 256Mb drives, now it's 8Gb or multiple 2.4Gb drives. Who needs 8Gb of disk space anyway? Well, I know I could fill it.

So, how do you decide how big to make your partition and why make multiple partitions anyway? I'll give a few ideas here. These comments are my own opinions on drive partitioning and do not take account of any special partitioning software.

Let's look at a little history of partitions and the shortsightedness of Microsoft and IBM. The original MS-DOS operating system (version 1.0) needed to create a method of storing data. IBM and Microsoft agreed that 32Mb of data would probably never be exceeded in our lifetime and made that the maximum capacity for any drive with the MS-DOS operating system. This worked well until the drive manufacturers made 40Mb drives. The users had to partition, because they exceeded the maximum.

With the release of MS-DOS 4.0, the 32Mb barrier was broken and drives could use huge (he said with a smile) drives of up to 256Mb before being required to partition them. Using larger drives came with a price. The allocation unit gets larger as the drive gets bigger. Allocation units are the minimum amount of drive space required to store data.

Larger drives require larger allocation units and this causes wasted disk space. Now people began to consider partitioning drives to conserve space in the allocation unit.

With the release of Windows 95 the maximum drive space in a partition is 2.4Gb, but now the hard drives have reached capacities of 8Gb and beyond. The allocation unit is also something to consider since the allocation unit on drives over 1Gb gets up to 32k. This means that every file, no matter what size it is, takes space from the drive in 32k amounts. The AUTOEXEC.BAT file, which is rarely larger than about 200 bytes, will use 32,000 bytes of storage space. This leaves 31,800 bytes of unusable disk space. Many users didn't want to waste this space and opted for smaller drive partitions.

Windows 98 gives us some new options. The 2.4Gb limit has now been increased to 8Gb or bigger. The allocation units on these partitions can also be kept to a small 4k by using the FAT32 file system. The file system redesigns the file allocation table (FAT) and allows the data to fit in smaller segments. When using FAT32 the current hard drives being manufactured will not exceed the partition limit.

Should hard drives be partitioned to smaller logical drives? I use the maximum partition size of the operating system decide that for me. If you have a drive that is too large to make into one partition, then make as many maximum partitions as needed. If possible make it only one partition and upgrade to Windows 98 and use the FAT32 file system. This will give you the most space for your drive purchase.

Questions, comments or suggestions? E-mail me at [tcanavan1@aol.com](mailto:tcanavan1@aol.com) or see me at any general meeting. I always enjoy discussing the many aspects of hardware support.

---

## SIG Notes:

By Paul Kurivchack

The final meeting of the Windows SIG at the Plainsboro Public Library was held on Wednesday December 30 at 8 P.M.

Joe Lazar, Jerry Henney and Bud Lewis were in attendance.

Continuation of the SIG meetings was discussed with the possibility of holding the meetings at SIG members homes to trouble shoot member specific issues. A general windows help session concluded the evening.

---

## Member News

Alfred Kleider, 71, died Nov. 29 at Univ. of Pennsylvania hospital. A member of the Princeton PC users group since 1994.

A physicist, he worked for Huges, Honeywell, and RCA. He was a pioneer of laser technology and worked with electro-optics and lasers at Fort Monmouth from 1972 to 1991. He recently taught computer skills to senior citizens at SeniorNet in Ewing.

He is survived by his wife, Sonya; two sons; a grandson; two stepchildren; and two step grandchildren.

---

## SIG Notes 2:

By Joe Lazar

In order to plan a program for Special Interest Groups (SIGs), feed back from members interested in such a Users Group activity is needed. Please send an e-mail message to Paul Kurivchack <[Kurivchack\\_p@compuserve.com](mailto:Kurivchack_p@compuserve.com)> or Joe Lazar <[JoeLazar@nerc.com](mailto:JoeLazar@nerc.com)>.

What subject matter would interest you for a SIG meeting? Some suggestions include all aspects of the internet and the Web. Techniques in desktop publishing and graphics, maintaining and trouble shooting the PC, backup techniques. Discussions of any special problems of your own PC, hands on tutorials and workshops on the use of anything concerned with the PC including popular and newer software.

Identify your sector or subject matter of interest. We would like to use the SIG activity to provide information that is not usually or conveniently provided at our regular general membership meetings.

Present attendance varies about 4 to 8 members. The SIG meetings traditionally have been held on the last Wednesday of the month. Would you prefer a different night? More participants are sought.

We ask for your viewpoint on providing a regular SIG program.



# PRINCETON PC USERS GROUP

<http://www.ppcug-nj.org>

## PPCUG Member E-mail Directory

Name Last	First	E-Mail Address	Name Last	First	E-Mail Address
Abolins	John	jda-ir@pluto.njcc.com	Kurivchack	Paul	kurivchack_p@compuserve.com
Ancier	Sherman	sancier@ibm.net	Landis	Houston	judge@alumni.princeton.edu
Axelrod	Albert	aaxelrod@erols.com	Laurie	Vic	hampsi@worldnet.att.net
Best	John J.	JJbest57@alum.mit.edu	Lazar	Joseph	joelazar@juno.com
Canavan	Thomas	TCanavan1@aol.com	Lewis	Larry	ll@gfdl.gov
Caris	Paul	pd_caris@csi.com	Lewis	Lloyd	Budnorth@juno.com
Carman	Tom	tom_carman@compuserve.com	Libes	Sol	sol@libes.com
Chilton	Neal	chilforce@aol.com	Lindbloom	Loree	loreesz@aol.com
Clerke	Len	lenc@castle.net	Lukpetris	Sylvia Sila	lukpetris@erols.com
Cohen	Jon	jon@pluto.njcc.com	Markward	Margaret	mteragram@aol.com
Corlis	Tim	tcorlis@ets.org	Maruska	John	maruska1@Juno.com
Colucci	Frank	dasweb1@aol.com	Metzler	Joseph	76116.3117@compuserve.com
Crossley	Helen	CrossleyHM@aol.com	Miller	Doug	d.n.miller@worldnet.att.net
Davis	Perry	perrydavis@compuserve.com	Oldenburg	Tom	oldenburg-ta@worldnet.att.net
Dinkins-Belton	Joyce	Joyce8NJ@aol.com	Olson	Gaylord	go@electrim.com
Dodge	Bill	B-Mdodge@juno.com	Papier	Philip B., Jr.	papierp@superlink.net
Duggins	Marsha	msd@gfdl.gov	Parker	Nicole	nparker239@aol.com
Edge, Jr.	Lewis	lewis@edgeassoc.com	Polignano	Vince	vincepo@worldnet.att.net
Ewer	Tim	tjewer@worldnet.att.net	Pratt	Zebulon	zpratt@aol.com
Frankel	Lois	lfrankel@pluto.njcc.com	Pruden	David	nedurp@aol.com
Foulkes	Frank	ffoulkes1@aol.com	Reichart	Richard	reichart@pluto.njcc.com
Gazzillo	Vince	vgazzillo@otis.state.nj.us	Rothstein	Frederick	fnroth@aosi.com
Gerwers	Hank	PSCI@idt.net	Rouse	Ron	DrRonRouse@aol.com
Goldberg	Ed	EdGoldberg@home.com	Sked	Bill	billsked@aol.com
Goldenberg	Kim	kim_goldenberg@bigfoot.com	Sneath	Blanche	PettieJ@Juno.com
Griegel	Wayne	wgriegel@ix.netcom.com	Stockwell	Hunt	huntstock@aol.com
Hardy	Wayne	wayne97wh@aol.com	Steinman	Arthur	amsteinman@juno.com
Hawryluk	Bill	hawr@compuserve.com	Suber	Michael J.	MPSuber@Juno.com
Henney	Jerry	GBHenney@aol.com	Sweeton	Andrew	andrew.sweeton@response-analysis.com
Henry	Chuck	CHenry1750@aol.com	Tayyabkhan	Mike	tayyabkhan@aol.com
Holly	Lois	lholly@ariel.Princeton.EDU	Tenner	Edward	tenner@clarity.princeton.edu
Houlihan	Bill	billh66@juno.com	Walshall	Ron	DKDM83A@prodigy.com
Johnson	Florence	credit@Juno.com	Weaver	Perry	Weaver@home.com
Juelch	Karl	karljnj@nerc.com	Weinberg	Robert	bweinb@worldnet.att.net
Kahan	Maurice	mkahan@juno.com	Weiss III	Edward	eweiss@eweiss.jvnc.net
Kerlake	David	Dongsung@Juno.com	Williams	Jan	SianiPowys@aol.com
Kleider	Al	coelop@ix.netcom.com	Williams	Ken	krw1948@worldnet.att.net
Kleinerman	Milt & Irma	Rafiki5513@aol.com	Williams	Rick	rick75@aol.com
Kocsis	John	JKocsis234@aol.com	Willis, Jr.	Lloyd	lwillis1@prodigy.net
Konvalinka	John	jkonvalinka@msn.com	Willis	Robert	robert4269@aol.com
Koosman	Milton	miltonk2@aol.com			

(Last Update: 3 January 1999)

Send Updates to kurivchack\_p@compuserve.com for inclusion in this listing.

### Consultants Corner

#### Cascade Media Group, Inc.

Jon Conant

335 Wall Street

Princeton, NJ 08540

609.430.9080 Fax: 609.430.9086

Voice Mail, Win/NT Networks,

Phone Systems & Wiring

*Provider of PPCUG Voice Messaging.*

#### Meyda Online

John Abolins, Sysop

BBS: 609-883-8124

World Wide Web Home Page:

<http://www.meydabbs.com/~jda-ir/>

### Consultants Corner

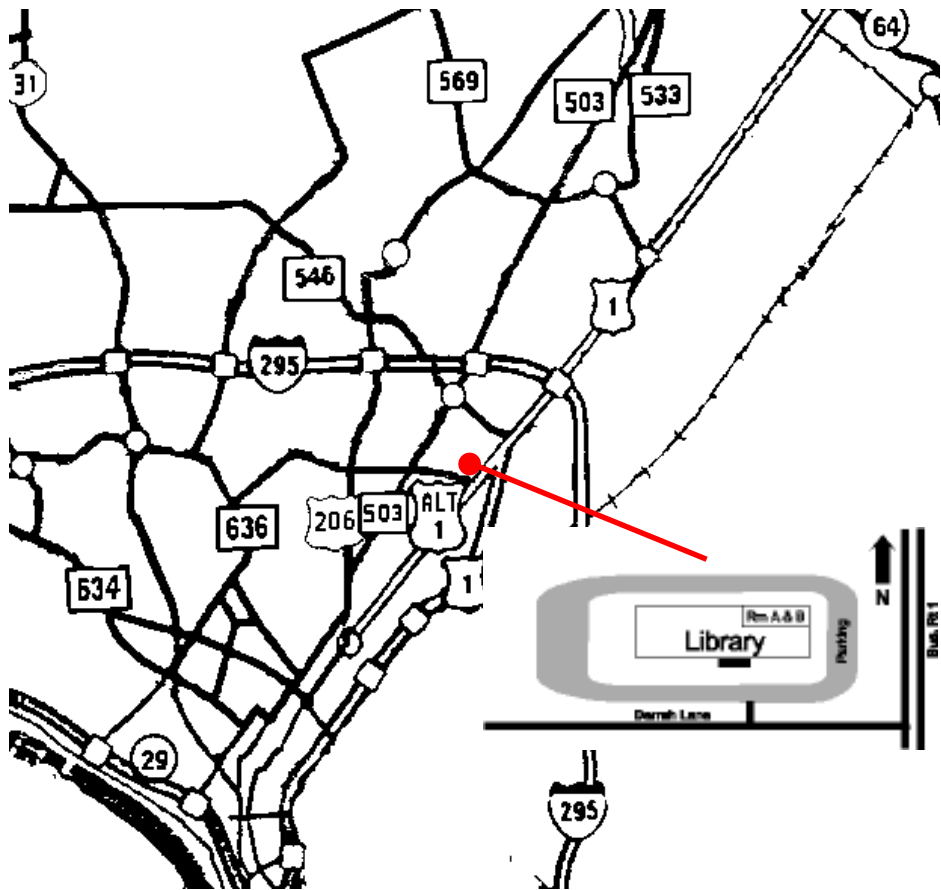
You can advertise your consulting business for \$25 per year in addition to your normal membership fee. The text space is your or your company's name plus five lines.



**The Lawrence Library is at the corner of Business Route 1 South and Darrah Lane.**

**From Princeton and North:** Take US Route 1 South, past the Quaker Bridge / Mercer Shopping Centers. Continue on approximately 1 3/4 mile past I295 to the Route 1 split, stay to the right to Business Route 1 (Brunswick Pike). First traffic light is Darrah Lane. Library is on right side. Park in lot towards Route 1 and to the rear. Enter Library at main entrance in front. Meeting rooms A & B are located through glass door on Route 1 side of building.

**From Trenton and South:** Take I295 North to US Route 1 South. Library is approximately 1 3/4 miles south of I295. Continue south to Business Route 1 (Brunswick Pike). First traffic light is Darrah Lane. Library is on right side. Park in lot towards Route 1 and to the rear. Enter Library at main entrance in front. Meeting rooms A & B are located through glass door on Route 1 side of building.



**Telephony & the PC  
January 11, 1999  
Lawrence Library**

**Princeton PC Users Group**  
P.O. Box 291  
Rocky Hill, NJ 08553